

THE IMPACT OF PRENATAL LEAD EXPOSURE ON COGNITIVE & PHYSICAL HEALTH OUTCOMES AMONG INFANTS AND CHILDREN IN BANGLADESH

BRIANA ABRAMS, SPT

ALEXA CARDELLA, SPT

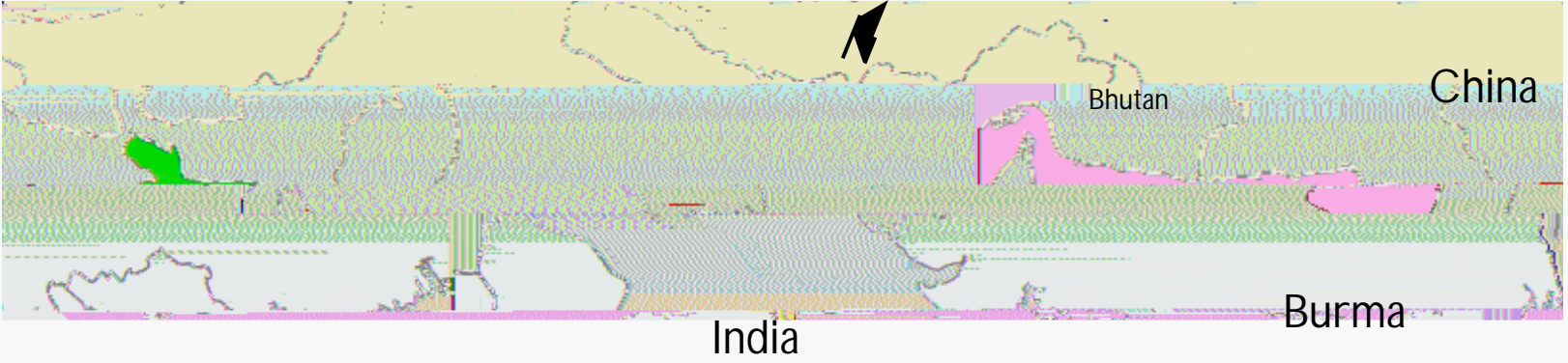
ALESIA HEIMES, SPT

MEGHAN NALLY, SPT

LORI WALTON, PT, DPT, MSCPT, MPH(S), PHD

NICHOLAS RODIO, PT, DPT









Lower Neurodevelopment Scores

Disrupt normal cellular processes & weaken immune defense

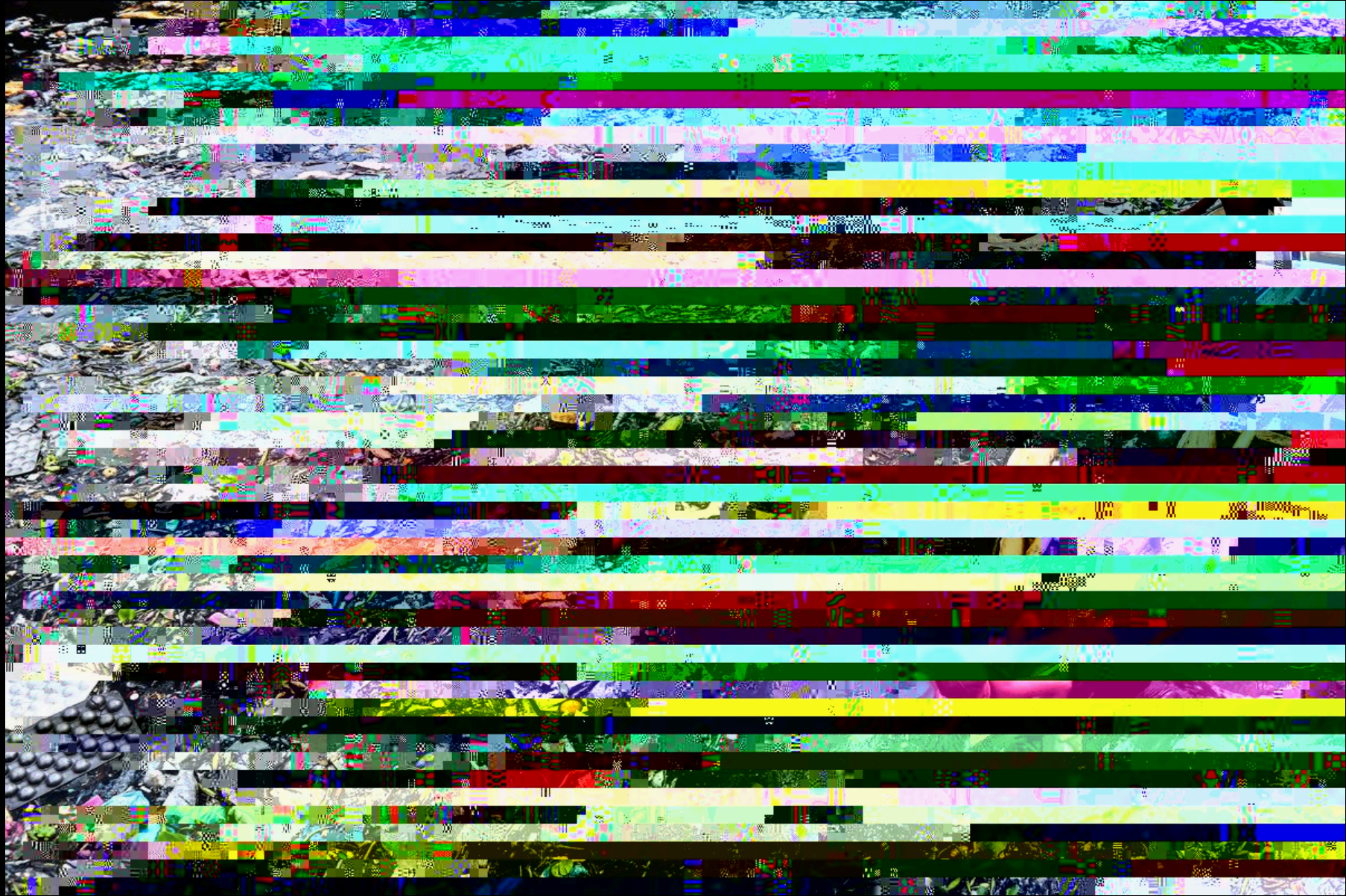
Deplete essential nutrients from body

GI Cancer

Long-term exposure: MS, PD, AD, MD, CA

Stunting in children









only

Type: Lead exposure

Time of lead exposure: During fetal development

Setting Bangladesh

Age outcomes are assessed: Birth to age 12

Health Outcomes: Stunting & cognitive scores



Studies were independently evaluated for methodological quality by two blinded reviewers using the *S I G N* (*SIGN*):
C S T .






*Citation searching was used where possible to do so, reporting the number of records identified from each source (rather than the total number across all databases/registers).

**If automation tools were used to identify records, the reasons for exclusion are indicated by the color of the box. If not, the reasons are listed in the text.









N between blood lead concentration and BSID cognitive scores

E in natural log cord blood lead in presence of stunting was associated with a 2.1 unit decrease in cognitive scores

A



Association between prenatal lead exposure and:



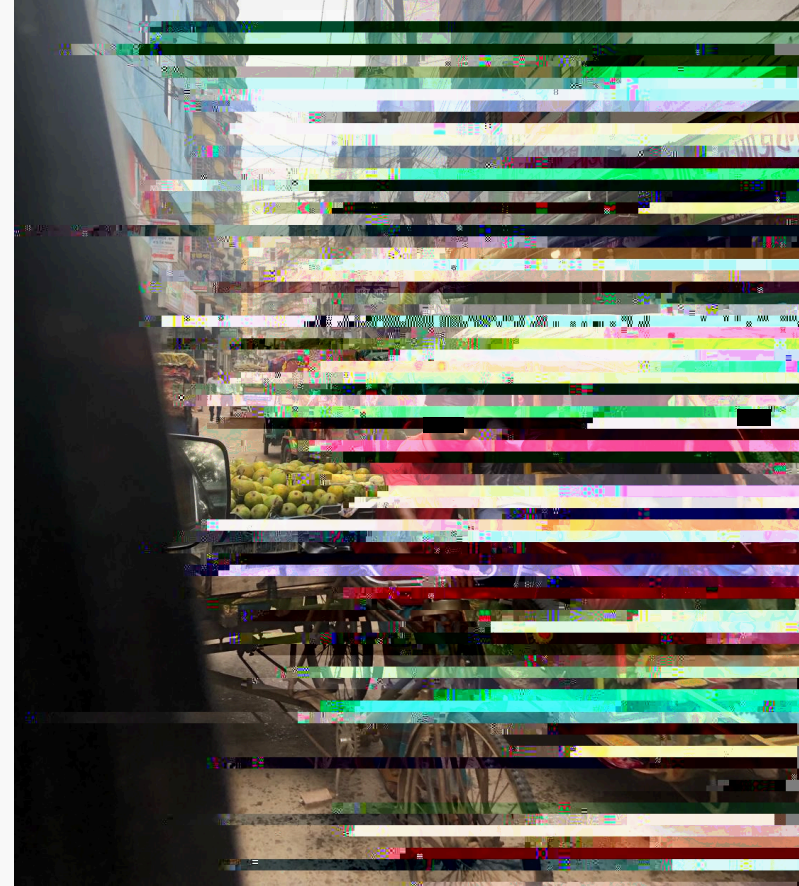
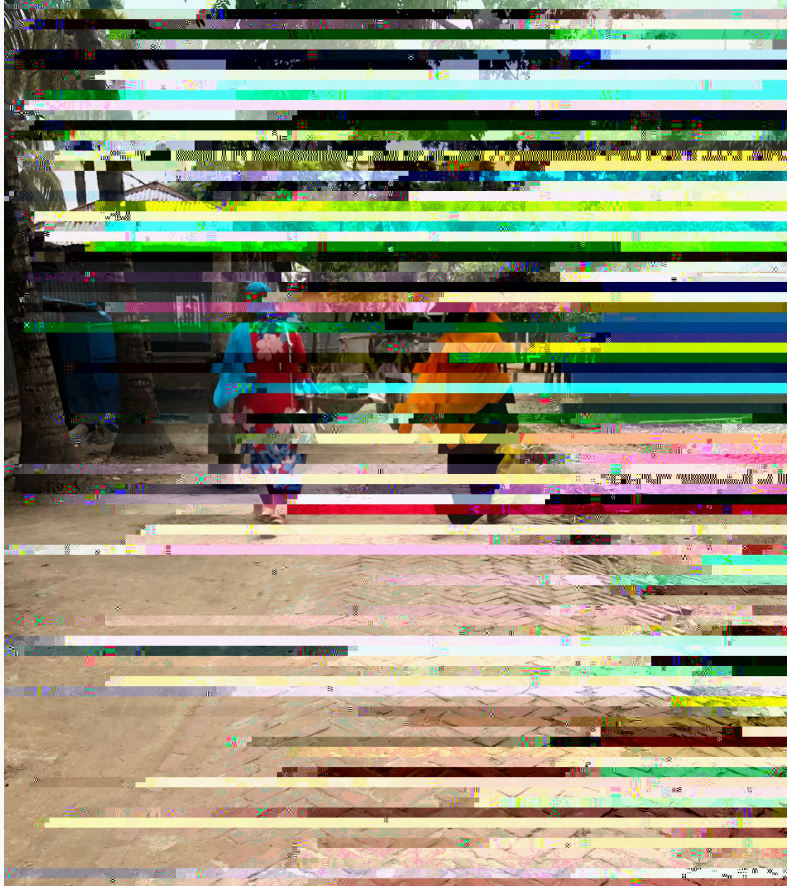


M the impact of maternal factors on prenatal lead exposure

I

B of potential impacts of lead exposure
A cognitive and physical screening to children
P





PHO O PERMISSION GRAN ED

- 
1. Gleason K, Shine JP, Shobnam N, et al. Contaminated turmeric is a potential source of lead exposure for children in rural Bangladesh. *J*

Thank you!

F A

L W , PT, DPT, MSCPT, MPH(S), PHD

N R , PT, DPT

I O'H

U S D P

T F , S , & S B



Any Questions?

